



WAIKĪKĪ IMPROVEMENT ASSOCIATION

Wikiwiki Wire

E-newsletter keeping you up-to-date on Waikīkī news, features, trends and more!



Contents

3
THE 2022 WAIKĪKĪ NEW
YEAR'S FIREWORKS IS ON!

5
2022 HO'OWEHIWEHI
AWARDS

9
WAIKĪKĪ HULA SHOW

10
STREET ACTIVITY IN & NEAR
WAIKĪKĪ

MORE WAIKĪKĪ NEWS, EVENTS & FOOD

NEW PROPERTY MAINTENANCE TOOLKIT
FOR STORM WATER COMPLIANCE

BASALT CHRISTMAS SPECIALS

FOOD GURU

HALEKULANI HEAVENLY INDULGENCE

HALEKULANI BAKERY REOPENS

HAWAI'I CONVENTION CENTER HOSTS
NA LEO PILIMEHANA HOLIDAY CONCERT
AND WINS PACIFIC EDGE MAGAZINE
AWARD

CELEBRATE THE HOLIDAY SEASON AT
INTERNATIONAL MARKET PLACE

INTERNATIONAL MARKET PLACE HOSTS
MAI HAWAII POP-UP SHOP

BEACHHOUSE AT THE MOANA - NEW
YEAR'S EVE 2022

KYO-YA HOTELS & RESORTS HONORS
ASSOCIATES WITH 50-PLUS YEARS OF
SERVICE WITH LEGACY CEREMONY

MOANA SURFRIDER - NEW YEAR'S EVE
2022

THE ROYAL HAWAIIAN RESORT -
CELEBRATE THE HOLIDAYS WITH US

CELEBRATE YOUR HOLIDAYS WITH US AT
THE SHERATON WAIKIKI

FIVE DELICIOUS WAYS TO BE MERRY AND
BRIGHT

SANTA CLAUS IS COMIN' TO ROYAL
HAWAIIAN CENTER

THE WAIKIKI PLAZA - DEC 2022

The 2023 Waikiki New Year's Fireworks is ON!



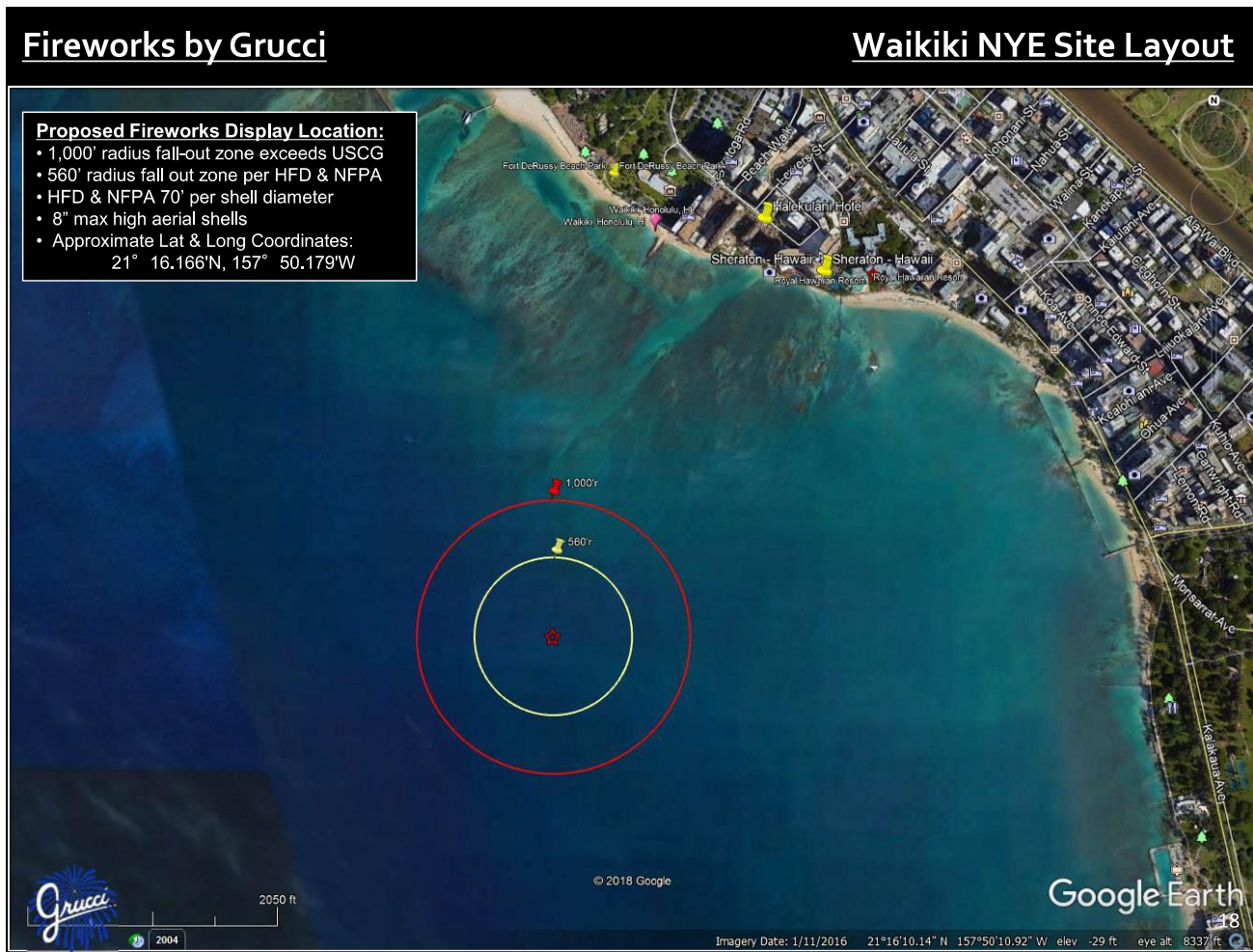
Sponsored by the members of the Waikiki Improvement Association, Fireworks by Grucci will welcome the new year, 2023, with a fabulous display! **On December 31st, at the stroke of midnight**, the sky will be filled with electrifying colors and bright lights. Shot from a barge off the coast, the fireworks would have good visibility throughout the Waikiki shoreline.

The following is a synopsis of the 2023 show:

The Opening -The opening is like the beginning of an action film; fast, intensive, and heart-pounding. It gets your attention quickly and foretells the grandeur to follow. It begins with a flurry of color and thunder, filling the lower-level view. Simultaneously a second level of specialty shells will be launched to create special effects rising above the barrage of color and thunder. On top of it all, large bursting chrysanthemums will cover the entire viewing area, creating a kaleidoscope of color and noise.

The Feature Presentation - The body of the program will exhibit the finest assortment of domestic and international fireworks such as Alpha-Grucci and multi-pattern shells. As the segments unfold, each brings an array of different effects displayed in a glorious style of multiple firings. All of these brilliant colors and special effects are used to reflect the mood and theme of the show while designer shells create the excitement, intensity and beauty that is the Grucci style. The main act concludes with a display of beautiful and powerful scenes featuring our trademark shell – the Grucci Gold Split Comet. Numerous shells are fired simultaneously, splitting and blazing as an arch across the night sky, leaving behind a sparking trail that creates a Golden Milky Way effect.

Grand Finale - From start to finish, the Grucci Fireworks Grand Finale provides a continuous lift and bombardment of light and sound, which is always rhythmically robust. Launched into the sky are red, white and blue star shells to begin the color saturation; then peonies and chrysanthemums shells burst open one level higher; thousands of flashing sateen report shells are then shot up to set the stage for the climax. The heavy barrage of sound begins with our main trumpeters; the Grucci Titanium salutes that quicken the tempo and rattle the sky at a stunning pace. All this is night capped with a starry umbrella of Golden Kamaru shells.



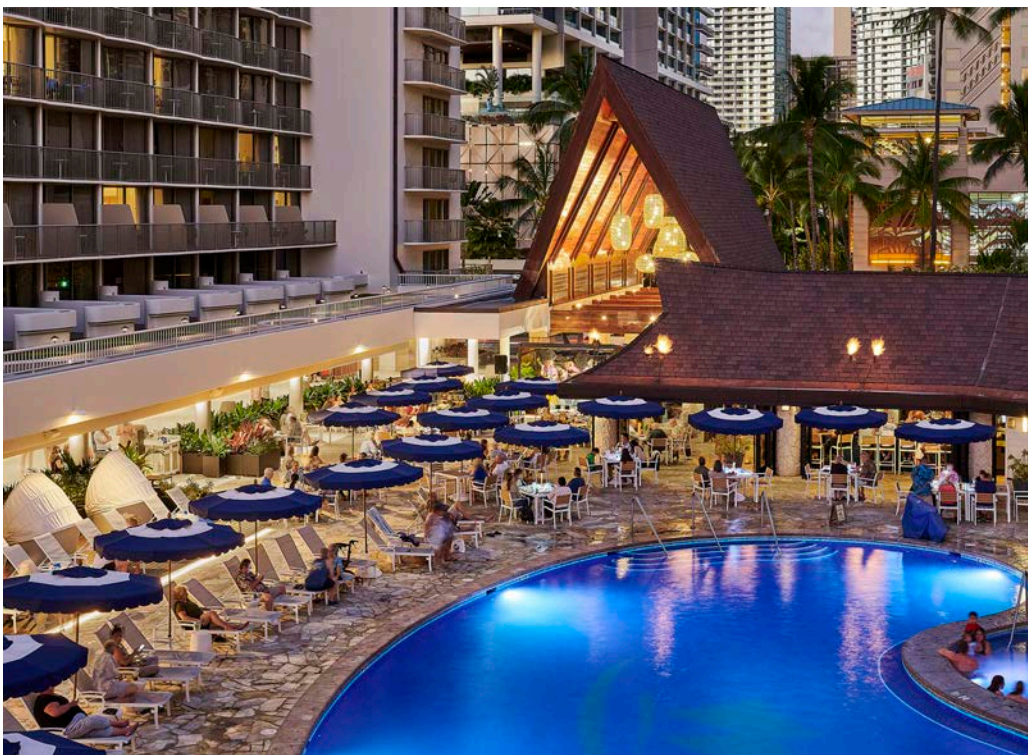
2022 Ho'owehiwehi Awards

On October 26th at the beautiful Halekūlani Hotel, the Waikīkī Improvement Association held its 2022 Annual Membership meeting. One of the meeting's highlights was the Ho'owehiwehi Awards which acknowledges new projects or renovations that add significantly to Waikīkī's product. The awards also include a special category called the Dr. George S. Kanahele Ho`okipa Award. This award is given to a person, project or place that best represents the values of aloha and ho`okipa (hospitality) embodied in Dr. Kanahele's life work.

HANA NUI

OUTRIGGER REEF WAIKIKI BEACH RESORT

The projects honored this year include the Outrigger Reef Waikiki Beach Resort which has undergone an \$80 million transformation that celebrates the fusion of authentic Hawaiian culture and barefoot luxury. During every step of their renovation, Outrigger worked closely with top designers and Native Hawaiians to pay homage to its rich Hawaiian roots. The property is reimagined with a focus on culture, sustainability, art and elevated hospitality!



Sophisticated upgrades to guest rooms and suites, chic poolside enhancements, unique dining and entertainment, the new Voyager 47 Club Lounge and Herb Kāne Lounge were included in the renovation. The A'o Cultural Center was created to serve as the hub for guests to engage in a spectrum of Hawaiian cultural activities such as lei making, hula or 'ukulele lessons.



Museum-quality artwork from leading contemporary Hawai'i artists grace the resort and help tell the rich story of Hawai'i. Artwork includes a 30-foot mural by Kamea Hadar of a traditional sailing canoe, being crewed by children and an intricate woven sculpture of the Hawaiian Islands that stretches across the Herb Kāne Lounge by fiber artist Marques Hanalei Marzan. Upon arrival through the iconic canoe hale entrance is Kalele: a 100-year-old outrigger canoe.





HANA IKI HALEKULANI

The next project recognized for its excellence is the Halekūlani Hotel renovation. Halekūlani’s public spaces have undergone an understated transformation inspired from Hawaii’s rich cultural heritage and encompassing a holistic sense of renewal.

Halekūlani’s guest accommodations have been thoughtfully revitalized and designed, enhancing the



property’s signature “seven shades of white” aesthetic philosophy. New elements of warmth and texture serve to enrich the design, infusing a sense of harmony and balance throughout. You will see subtle influences of European, Hawaiian, and Asian cultures.





KANAHELE AWARD | KANI KA PILA GRILLE

The Kanahele Award went to the Kani Ka Pila Grille, a place for locals and visitors alike to come and enjoy Waikīkī as it should be – where live authentic Hawaiian music lifts spirits, among other genres. Listening to live Hawaiian music in person is an integral part of visiting the Islands and Kani Ka Pila Grille stands apart from others in that it's like a backyard jam session with family and friends by legendary and up-and-coming Hawaiian artists. Its name, meaning “Let’s Play Music,” was fittingly bestowed by legendary slack-key guitarist Cyril Pahinui who performed there regularly. The venue holds state-of-the-art sound and lighting systems in a contemporary outdoor setting where guests can enjoy the comfort and company of Hawai‘i’s best talent, including the who’s who of Hawaiian music, from Grammy winners like Kalani Pe‘a to winners of the Nā Hōkū Hanohano Award (a.k.a. the Hawaiian GRAMMYs) like Sean Na‘auao to artists like “master of ki ho‘olu (slack key guitar) and minister of Aloha,” Kawika Kahiapo.



The space also features iconic photography of the Pahinui family, Uncle Cyril and contemporary Kani Ka Pila Grille artists. It proudly hosts various festivals, concerts, events and talent search contests that provide opportunity for new, upcoming talent. Steeped in island-music history, Kani Ka Pila Grille, now 14 years old, has earned its place as the heart of live Hawaiian music in Waikīkī.



Waikiki Hula Show

AT THE KUHIO BEACH HULA MOUND

WEDNESDAYS, FRIDAYS, AND SATURDAYS, 6:00-7:00 PM, WEATHER-PERMITTING

* EXCEPT WEDNESDAY, DEC 7 DUE TO PEARL HARBOR COMMEMORATIVE PARADE

* EXCEPT SATURDAYS CHRISTMAS EVE AND NEW YEAR'S EVE

Authentic Hawaiian music and hula by Hawaii's finest Halau Hula (dance troupes) and Hawaiian performers. Opens with traditional blowing of conch shell.

DETAILS

- Located on the beachside of Kalakaua Avenue near the Duke Kahanamoku Statue, diagonally across from the Hyatt Regency hotel.
- Free, outdoors, casual, seating on the grass; beach chairs, mats, etc. okay. Cameras welcomed.
- No show if parades or street fairs are scheduled.

Presented by Hyatt Regency Waikiki Beach Resort & Spa, Hawaii Tourism Authority, Southwest Airlines, City & County of Honolulu and Waikiki Improvement Association.

For information, call 808-843-8002.



STREET ACTIVITY

IN AND NEAR WAIKĪKĪ (COURTESY OF THE CITY)

STREET BIKERS UNITED-TOYS FOR TOTS CARAVAN

December 4, 2022 Sunday

10:30 AM Roads Close

12:00 PM Roads Reopen (Approximate)

STREET BIKERS UNITED-TOYS FOR TOTS CARAVAN sponsored by Street Bikers United Hawaii. The event is expected to have 4,000 motorcycles. It will start at Magic Island, to Ala Moana Blvd., to Kalakaua Ave., to Monsarrat Ave., to Waikiki Shell Lots 3 and 4. Contact: Ray Pagan 282-6419 Email: onerican@hawaii.rr.com

KALAKAUA MERRIE MILE RUN

December 10, 2022 Saturday

5:30 AM Roads Close

8:30 AM Roads Reopen (Approximate)

KALAKAUA MERRIE MILE RUN sponsored by Honolulu Marathon Association. The event is expected to have 2,000 runners. Lane closures will begin at 5:30AM. It will start at Monsarrat Ave., eastbound, to Kalakaua Ave., u-turn fronting Hyatt Regency, to Kalakaua Ave. to end at Queen's Beach. Contact: JJ Johnson 782-2161. Honolulu Marathon Assn. 734-7200 Fax: 732-7057 For more info, visit their website: <http://www.honolulumarathon.org/>

STREET ACTIVITY CONT.

IN AND NEAR WAIKĪKĪ (COURTESY OF THE CITY)

HONOLULU MARATHON

December 11, 2022 Sunday

2:30 AM Roads Close

4:00 PM Roads Reopen (Approximate)

HONOLULU MARATHON sponsored by Honolulu Marathon Association. They expect to have 15,000+ runners. It will start on Ala Moana Blvd., near Queen St., to Ala Moana Blvd., ewa bound, to Nuuanu Ave., to King St., to Kapiolani Blvd., to Piikoi St., to Ala Moana Blvd., to Kalakaua Ave., to Monsarrat Ave., to Paki Ave., to Diamond Hd. Rd., to 18th Ave., to Kilauea Ave., to Waialae Ave., to Kalanianaʻole Hwy., to Hawaii Kai Dr., to Keahole St. to Kalanianaʻole Hwy., to Kealaolu Ave., to Kahala Ave., to Diamond Head Rd., to Kalakaua Ave., end at Honolulu Marathon finish/Kapiolani Bandstand. Roadways closed: 1)H1 Freeway closed at Waialae Ave. off ramp to Aina Koa Ave., 2)Kalanianaʻole Hwy., makai half closed for runners, between Aina Koa Ave. & Kawaihae St., mauka half converted to contra flow, 3)Kalanianaʻole Hwy., all lanes closed, between Kawaihae St. & Keahole St., Contact: JJ Johnson 782-2161. Honolulu Marathon Assn. 734-7200 Fax: 732-7057 For more info, visit their website: <http://www.honolulumarathon.org/>

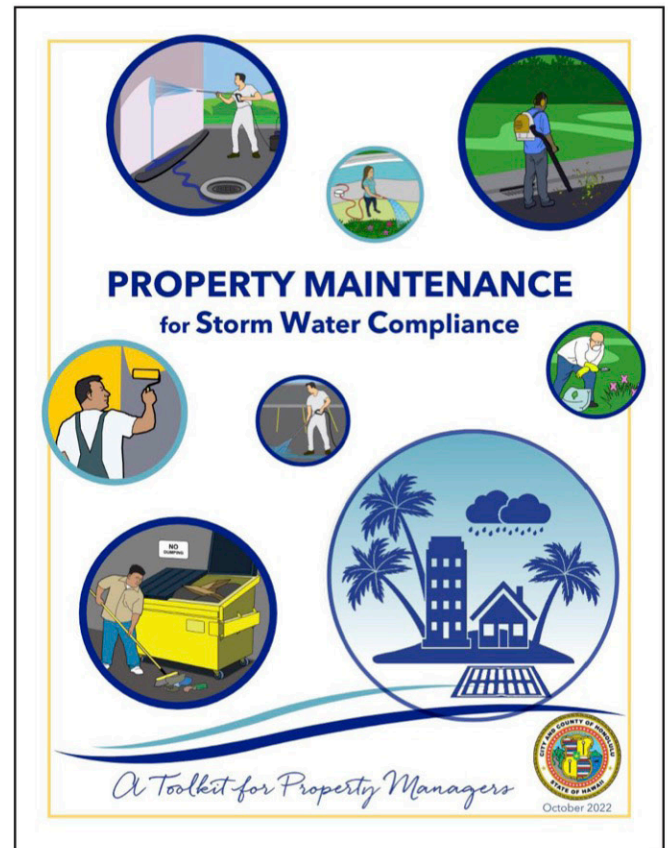
NEW PROPERTY MAINTENANCE TOOLKIT FOR STORM WATER COMPLIANCE

New City Guidance for Property Managers

Pollutants from common property maintenance tasks such as painting, disposing of grass cuttings, or emptying the trash, can harm our streams, beaches, and ocean. Waikīkī's residential community and the visitors who frequent its legendary shorelines want clean waters that are safe to recreate in and support healthy marine life.

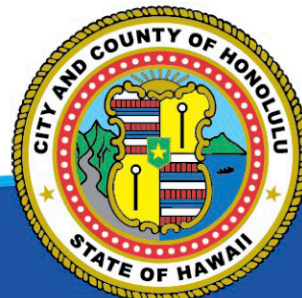
The City's Storm Water Quality Division has a new Property Maintenance Toolkit to equip property managers and owners with the knowledge of appropriate best management practices (BMPs) to prevent storm water pollution and be compliant with City storm water regulations.

The Toolkit offers specific guidance on practices that may be implemented for several common activities including: dumpster and trash maintenance; landscape maintenance; painting; and pressure washing sidewalks, buildings, and vehicle use areas.



Find the Property Maintenance for Storm Water Compliance Booklet at StormWaterPMToolkit.org

Everyone can play a role in protecting our storm water quality. If you witness anything other than rainwater entering the City's streets or storm drains, please call the Environmental Concern Line at 808-768-3300.

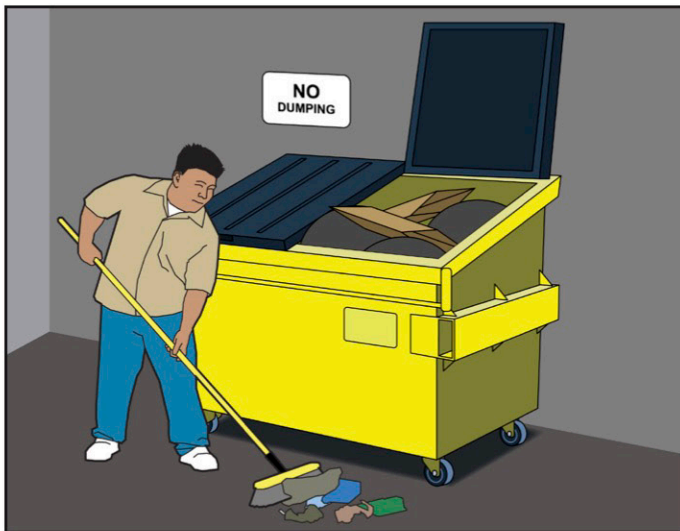


NEW PROPERTY MAINTENANCE TOOLKIT FOR STORM WATER COMPLIANCE

Handy Step-by-Step Tips

It also contains tips for selecting a contractor who follows the prescribed BMPs, a storm water site mapping exercise, an easy self-inspection checklist to stay on top of potential issues, and language from the Revised Ordinances of Honolulu section 14-12.23 explaining the violations and fines that may result from unlawful discharges.

The StormWaterPMToolkit.org website contains resources and information for other aspects of property maintenance including the routine maintenance requirements for post-construction BMP features and permeable pavement.



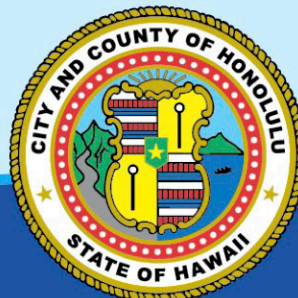
City fines for unauthorized discharges can be up to \$25,000 per violation, per day.

R.O.H. 14-12.23 to 28



Topics Include

- Landscape Maintenance
- Dumpster & Trash Maintenance
- Pools, Spas & Water Features
- Pressure Washing
- Painting
- Inlet Protection Device Removal
- Selecting A Contractor
- Private Storm Drain Connections
- Post-Construction BMPs



BASALT
AT DUKES LANE MARKET & EATERY

CHRISTMAS SPECIALS

December 25, 2022

BRUNCH

Available 7am - 2pm

Christmas Charcoal Pancakes \$22

Santa's North Pole workshop with edible decorations

Prime Rib & Eggs \$32

8 oz slow roasted Hawaiian salt and herb crusted,
garlic mashed potatoes, two eggs any style

DINNER

Available 4:30 - 9:15pm

Big Island Kona Kampachi \$18

Red wine poached pear, white kimchee,
watermelon radish, ume, shiso

Pan Roasted Duck Breast \$42

Lilikoi glazed, Big Island heart of palm,
endive, pomegranate

Tomahawk Steak *FOR TWO* \$180

32 oz grilled Australian wagyu bone-in ribeye carved tableside,
garlic mashed potatoes, asparagus vierge, red wine demi glace

Lemon Semifreddo \$12

Rosemary crunch, candied lemon peel, raspberry

*While supplies last.
Tax and gratuity not included.*

For Reservations (808) 923-5689

2255 Kuhio Ave Honolulu, HI 96815

HOLIDAY SPECIAL

GET \$20 FREE

with purchase of
\$100 in Gift Cards

- NOW THRU DECEMBER 31, 2022 -



*This promotion is available at BASALT only.
Promotional Gift Card cannot be exchanged for cash.*



fg

**FOOD GURUS
HAWAII**

We Move Brands Off Shelves & Into Hearts

Food Gurus is Hawaii's Food & Beverage Marketing Specialist.
One -Stop Comprehensive Creative, Digital, Marketing &
Publicity Customized Solutions.

foodgurususa.com

Contact us for a free consultation
Doug Harris - doug@digivortex.com | (808) 946-4626





Halekulani
On the Beach at Waikiki

Halekulani Heavenly Indulgence

Experience gracious hospitality at our "House Befitting Heaven." Plan a stay this holiday season with our new *Halekulani Heavenly Indulgence* festive package, where guests stay four nights and receive the fifth night with our compliments. More time to play. More time to enjoy. More time on us.

Reservations must be booked by December 15, 2022, for stays from November 27 – December 20, 2022, or January 3 – March 31, 2023. Minimum consecutive five-night stay required, subject to availability at time of booking, and not combinable with any other promotions.

For more information on *Halekulani Heavenly Indulgence* or to make a reservation, please visit www.halekulani.com and use promotional code FIFTHNIGHT at time of booking, or call (844) 873-9424.



Art of Wellbeing Promotions - December

December 10: The Secret to Longevity

- Discover how cultures around the world have mastered the art of aging well, and how to support your own process. The one-hour discussion is open to the public and is \$25 per person.

SpaHalekulani Introduces Hydrafacial Treatment

- For the month of December, guests will receive a complimentary gift (valued at \$25) with a purchase of every Hydrafacial.

Please call 808-931-5322 for more information and to make a reservation.



Limited Edition Halekulani Holiday Cookie Tins

Just in time for the holidays! This limited-edition Halekulani holiday cookie tin features a scrumptious assortment of Milk Chocolate Dipped Macadamia Nut, Dark Chocolate Dipped Macadamia Nut, and Oatmeal cookies made by Big Island Candies exclusive for Halekulani. \$55 + taxes. Get yours while they last at our Halekulani Boutique.



HALEKULANI BAKERY REOPENS

December 22, 2022

Thursdays – Sundays

6:30 – 11:30 am



HALEKULANI BAKERY

A culmination of art and science featuring delectable artisan breads, a contemporary coffee bar with specialty coffees, pastry pairings, and savory bites.

Refer to the pop-up events below and see when our Salted Caramel croissant makes its first appearance...

If you are walking from Kalia Road, the Bakery will be across the street from Halekulani.



HALEKULANI BAKERY POP-UP EVENTS

In anticipation of the reopening of the Halekulani Bakery, we will be having three different pop-up events in the Halekulani Gatehouse from 10:00 am to 2:00 pm.

Each Sunday, we will be featuring different specialty items for sale:

Dec 4: Éclair, Fruit Tart, Banana Bread, and Vegan Muffin

Dec 11: Pabana, Chocolate Croissant, Mango Blueberry Muffin, and 1½ pound Sourdough Loaf

Dec 18: Salted Caramel Croissant, Everything Croissant, Macadamia Nut Sticky Bun, and Jumbo Chocolate Chunk Cookie.



HAWAII™

CONVENTION CENTER

Where Business and Aloha Meet

Dinner and General Admission Tickets Available for Na Leo Pilimehana Holiday Concert



Celebrate the holidays with loved ones and friends while enjoying a special buffet dinner and live performance by the best-selling Hawaiian female group in the world.

Award-winning trios Na Leo Pilimehana and special guest Maunalua will perform at the Hawai'i Convention Center's 4th-floor Ballroom on Saturday, Dec. 17, 2022.

Guests can choose from several ticket options:

- **NEW: General Admission tickets** offer first-come, first-served seating with entry at 6:45 p.m. for the Na Leo Concert at 7 p.m., \$75 per person
- **Dinner tickets** include dedicated seating and a buffet dinner from the Center's Executive Chef Hector Morales starting at 5:30 p.m. (entry at 5 p.m.), also includes a performance by Maunalua and an event-exclusive signed Na Leo CD, Na Leo Concert at 7 p.m., \$185 per person
- **Tables of 10** (dinner tickets) are available for a special rate.

Parking is available at the Center for \$12 per vehicle.

For questions, please email info@hccasm.com.

Hawai'i Convention Center Wins Pacific Edge Magazine Award

On Nov. 3, 2022, the Hawai'i Convention Center was honored as an award winner for its "Commitment to Green" at the Pacific Edge Magazine 2022 Business Achievement Awards. The Center has been widely recognized for its environmental sustainability efforts at the local, state and national levels.

The Center's guests, planners, staff and communities have come together for nearly 25 years to preserve, protect and enhance the natural beauty of the Hawaiian Islands. Our Ho'omaluo program celebrates that commitment with a multi-faceted approach to environmental conservation that inspires everything we do and touches everyone we serve.



INTERNATIONAL MARKET PLACE

Celebrate the Holiday Season at International Market Place

Photos with Santa, Shop & Save and Gift of Mele are among December's delights!

Get excited about the upcoming Christmas season by visiting Waikiki's shopping and entertainment hub, **International Market Place**. They've got holiday festivities happening all December long, so don't miss your chance to do some wish-list shopping, enjoy live music, and capture lasting memories with Santa! The stores are brimming with special merchandise and many restaurants and dining outlets are preparing extra special treats and tastes, designed to "put the ho-ho-ho" in the holidays.



Join us for the most wonderful time of the year!

International Market Place will host weekly "Gift of Mele" concerts designed to get everyone in the holiday spirit. There will be photos with Santa and a very special gift with purchase in addition to nightly live Hawaiian entertainment and the Mahiku Farmers Market.

International Market Place is sure to be a special place during this festive season. Whether you're enjoying a Christmas vacation or staying local, check out the following events to plan your perfect visit.

The schedule of Holiday events and activities includes:

- Open Now through Saturday, December 24: New **"Mai Hawaii" Pop-Up Shop**. Hosted by Mahina Made and Ho'omau Hawaii Market, the shop carries products from 6 locally owned, female-founded businesses. There are exceptional handcrafted and limited-edition items from clothing to accessories, home goods, and locally made skincare products. They have products that you won't find anywhere else. Located on Level 2, Mauka Court. Open daily through Christmas Eve.
- Thursday, December 1 – Saturday, December 24: **Photos with Santa**. The Hawaiian Holiday Santa will be stationed with a beautifully decorated backdrop on Level 2 near

Mitsuwa Market. Professional photo packages will be available in both digital and print. Parking validated with purchase of photo package.

- **Monday through Saturday, 11:00 am – 7:00 pm** (Break 2:00 pm – 3:00 pm)
 - **Sunday, 12:00 pm – 6:00 pm** (Break 2:30 pm – 3:00 pm)
 - **Christmas Eve (Dec 24), 10:00 am – 4:00 pm** (Break 1:00 pm – 2:00 pm)
-
- **December 1 – 15: Shop & Earn** – This special holiday deal offers shoppers a \$50 International Market Place gift card when they spend \$250 in same-day receipts.
 - **Saturday, December 10: Create Floral Table Decorations** – Learn to make beautiful floral table arrangements with expert Lei Maker Mealeana Estes. This special event is complementary with limited availability, located in Queen's Court from 11:00 am – 1:00 pm. Visit shopinternationalmarketplace.com to make a reservation.
 - **"Gift of Mele" Holiday Concerts** – Enjoy free weekly concerts with local Hawaiian musicians. The performances are presented in collaboration with Haku Collective, a production company that promotes artists and stories from Hawaii. Level 1, Queen's Court.
 - **Saturday, December 10** – Sienna Souza, 11:30 a.m. to 12:30 p.m.
 - **Friday, December 16** – Hula and mele show with 'Uhe'uhene, 4 to 5 p.m.
 - **Wednesday, December 21:** Enjoy musical magic with **Kimié Miner**. The Hoku Award-winning and Grammy-nominated artist will perform music from her "Christmas in Hawai'i" album and other local favorites, accompanied by **Deandre & Imua Garza**, 6:30 to 8 p.m.
 - **Saturday, December 31, 9:30 p.m. – 2 a.m.** – **Ring in the New Year with a Grand Party on the Grand Lānai.** Why go to one party, when you can go to five! Ring in the New Year in style from the Grand Lānai at International Market Place where you can "Pop, Fizz, Clink" and party hop to and from multiple parties hosted by your favorite restaurants on the Grand Lānai.
 - Five restaurants join together to welcome revelers to this new, ticketed event.
 - One admission gains entry to multiple venues.
 - Satellite bars throughout the Grand Lānai allow ticket holders to sip libations outdoors under the stars while enjoying live entertainment

"We truly look forward to welcoming guests this holiday season. After two years of having to limit our gatherings, it's especially gratifying to once again host these activities and create opportunities for everyone to feel the warmth of Christmas and the aloha spirit, said Malia Zannoni, Marketing and Sponsorship Director.

For more information, visit <https://shopinternationalmarketplace.com>

INTERNATIONAL MARKET PLACE

International Market Place Hosts Mai Hawaii Pop-Up Shop

A special collection of 6 locally owned, female-founded businesses you won't want to miss.



[International Market Place](#) is offering a special, one month only, holiday shopping opportunity with pop-up shop “**Mai Hawaii**” open now through December 24. Designed by Mahina Made and Ho'omau Hawai'i Market, Mai Hawaii brings together 6 locally owned, female-founded businesses featuring a range of items from clothing to accessories, home goods, and locally made skincare products. Support small businesses and find unique gifts for the whole family.

Mai Hawaii will include the following stores:

- **[Mahina Made](#)**: Products rooted in Hawaiian culture and values. They feature a range of locally inspired clothing, home décor, and accessories.
- **[Mo'o Hawai'i](#)**: Hawai'i inspired schools supplies – bringing culture into the classroom.
- **[Yireh](#)**: Socially conscious and ethically made women's fashion, inspired by and designed in Honolulu.
- **[Ao Organics Hawai'i Skincare](#)**: Carefully formulated affordable skincare products for all skin types.
- **[Mohala Eyewear](#)**: An inclusive eyewear brand designed to find the perfect fit for every woman.
- **[Onepa'a Hawai'i](#)**: Curating conscious clothing for the whole family.



The pop-up shop is open daily from 11 a.m. to 8 p.m., on Level 2, Mauka Court. Mai Hawaii will offer exclusive products and in-store discounts, as well as an online giveaway to win \$50 shop credit from each of the six brands. Click [here](#) to enter.

International Marketplace will be hosting holiday festivities happening all December long, so be sure to check out the Holiday Schedule at <https://shopinternationalmarketplace.com>.

beachhouse

at the moana

vibrant island cuisine

NEW YEAR'S EVE 2022

\$195++ PER PERSON

\$50 WINE PAIRING

Introduction

caviar blini, gold leaf

I

Chilled Kona Lobster

kona lobster, avocado mousse, big island heart of palm, coconut vinaigrette, taro crisp, lime caviar

II

Hokkaido Scallops

citrus Champagne beurre blanc, smoked trout roe, corn puree

Intermezzo

calamansi sorbet, pop rocks

III

Chilean Sea Bass

gnocchi, mari's garden rainbow swiss chard, maitake mushroom, uni foam, bordelaise

or

Snake River Farms Kobe Stripsteak

winter black truffle, celeriac, pearl onion, Kualoa Ranch heirloom beans, peppercorn

Dessert

Chestnut Mont Blanc

chantilly cream, caramel sauce, lemon dry meringue, chocolate garnish

Featured Cocktail

"From Rags to Riches"

Dubonnet Rouge, Amaro Montenegro, Angostura, sugar, Taittinger Champagne



**KYO-YA HOTELS &
RESORTS HONORS
ASSOCIATES WITH
50-PLUS YEARS OF**

SERVICE WITH LEGACY CEREMONY

HONOLULU – Kyo-ya Hotels & Resorts, the ownership group for six hotels, recently honored its longest-serving employees with the planting of a legacy tree to kick off an extraordinary celebration at The Royal Hawaiian, a Luxury Collection Resort. The Royal Hawaiian is one of the six hotels owned by Kyo-ya Hotels & Resorts; the others are: historical treasures Moana Surfrider, A Westin Resort & Spa and the Palace Hotel in San Francisco, Calif., as well as three Sheraton hotels in Hawaii: Sheraton Waikiki, Sheraton Princess Kaiulani and Sheraton Maui in Kaanapali.

Senior Vice President Michael Takayama of Kyo-ya Management Company, opened the event by saying the associates now become a part of Kyo-ya's Ho'oilina – or legacy.

The 2022 Class of Kyo-ya Legacy Associates represents a diverse, cross-section of employees, ranging from hotel operations to administrators to executives, including a former general manager, senior vice president for Kyo-ya Management Company and a current associate who last month became the first Kyo-ya associate selected as one of only 10 winners of the 2022 J.W. Marriott Award of Excellence.

The honorees include:

- Jackie Arakaki – Kyo-ya Hotels & Resorts
- Frederick Cadorna – Sheraton Waikiki
- Mason Chung – Sheraton Waikiki
- Joanne Hamasaki – Kyo-ya Hotels & Resorts
- Richard Hashimoto – Sheraton Princess Kaiulani
- Kehaulani Kam – Waikiki Collection (4 Waikiki properties)
- Lou Ellen Kaneshiro – The Royal Hawaiian, a Luxury Collection Resort
- Julie Loo – Sheraton Waikiki
- Jacinto Madriaga – The Royal Hawaiian, a Luxury Collection Resort
- Godfrey Maeshiro – Sheraton Princess Kaiulani
- Ernie Mizushima – Moana Surfrider, A Westin Resort & Spa

- Cyrus Oda – Kyo-ya Hotels & Resorts
- Frederick Orr – Sheraton Princess Kaiulani
- Gilbert Shibao – Sheraton Maui
- Roy Takahashi – Sheraton Maui Resort & Spa
- Joyce Tihada – Sheraton Maui Resort & Spa
- Lovene Tsuchiya – Waikiki Collection (4 Waikiki properties)
- Romulo Vea – The Royal Hawaiian, a Luxury Collection Resort
- Elaine Wong – Sheraton Waikiki
- Dolores Zane – Sheraton Waikiki

Two others, Frederico Soliven and Susan Oshiro, were honored posthumously.



The tree planting was followed by a luncheon, and the unveiling of a plaque that has been created to be displayed at each hotel in perpetuity, and will contain the names of the honorees, plus those who will be joining this elite group in the coming years. There will also be a permanent plaque at the site of the tree in the Coconut Grove of The Royal Hawaiian.

Kyo-ya has a long history in Hawaii dating back to 1961. The company recently completed extensive renovations and upgrades, investing more than \$300 million in its Waikiki properties alone, and plans to continue its investment to ensure Waikiki maintains its reputation as a world-class destination. Kyo-ya is committed to strengthening the communities where it does business by partnering with local nonprofit organizations, community establishments and community leaders who share the same vision and passion for making a difference.

MOANA SURFRIDER

A WESTIN RESORT & SPA

WAIKIKI BEACH

NEW YEAR'S EVE 2022

• *A Great Gatsby Event* •

\$50 ENTRANCE FEE

FOR NON HOTEL GUESTS

INCLUDES 1 DRINK

COMPLIMENTARY ENTRY

FOR HOTEL GUESTS

AND GUESTS UNDER 21 YEARS OLD

6PM - MIDNIGHT

the veranda



beachhouse

at the moana

vibrant island cuisine

12.31.2022



**THE
ROYAL HAWAIIAN
RESORT
WAIKIKI**

*Celebrate the holidays with us at
The Royal Hawaiian*

THANKSGIVING DINNER AT AZURE

Thursday, November 24th, 2022

5:30 PM - 8:30 PM

Three-Course \$150 per adult | \$55 per child (under 12)

Wine Pairing \$55

CHRISTMAS EVE DINNER AT AZURE

Saturday, December 24th, 2022

5:30 PM - 8:30 PM

Three-Course \$180 per adult | \$55 per child (under 12)

Wine Pairing \$55

CHRISTMAS DINNER AT AZURE

Sunday, December 25th, 2022

5:30 PM - 8:30 PM

Three-Course \$180 per adult | \$55 per child (under 12)

Wine Pairing \$55

NEW YEAR'S EVE DINNER AT AZURE

Saturday, December 31st, 2022

8:00 PM - 12:00 AM

\$300 - \$400 per adult | \$200 - \$300 per child (under 12)

Includes Buffet Dinner, 3 Libations & Champagne Toast

NEW YEAR'S EVE LUAU ON THE OCEAN LAWN

Saturday, December 31st, 2022

8:00 PM - 12:00 AM

\$350 - \$400 per adult | \$200 - \$250 per child (under 12)

Includes Three-Course Dinner, 3 Libations & Champagne Toast

Pricing is exclusive of 19% service charge and 4.712% tax.
CASH TRANSACTIONS NOT ACCEPTED AT THIS TIME



**scan here to book
your reservation**



SHERATON
Waikiki

CELEBRATE YOUR HOLIDAYS WITH US AT THE SHERATON WAIKIKI

THANKSGIVING DINNER ^{AT THE EDGE}

Thursday, November 24th at 5:15pm - 8:30pm
Three-Course Adult \$85 | Three-Course Child (*under 12*) \$45

CHRISTMAS DINNER ^{AT THE EDGE}

Sunday, December 25th at 5:15pm - 8:30pm
Three-Course Adult \$95 | Three-Course Child (*under 12*) \$55

NEW YEAR'S EVE DINNER

Saturday, December 31st at 8:00pm - 12:00am
Adult \$275 - \$350 | Child (*under 12*) \$200 - \$250
Includes Dinner Buffet, 3 Libations, Champagne Toast at Midnight
Live Entertainment from Christian Yrizarry & Kapena



[scan here to book
your reservation](#)

Pricing is exclusive of 19% service charge and 4.712% tax.
CASH TRANSACTIONS NOT ACCEPTED AT THIS TIME



Five Delicious Ways to Be Merry and Bright



Get in the holiday spirit with Hawaii's favorite restaurants. All in one place.

Nothing encourages people to get in the holiday spirit like talking story over a satisfying meal. [Waikiki Beach Walk](#) has an array of award-winning dining experiences perfect for bringing together friends and family this season. Check out these restaurants for reservation openings, group meals and events, take-out deals and special holiday menus.

In addition to delightful dining, Waikiki Beach Walk's collection of boutiques are brimming with holiday merchandise. The annual **"7 Nights of Christmas"** is a week-long celebration of traditional hula and song by local hula halau and well-known entertainers. The series begins on **Monday, December 19** and runs nightly from **6:00 to 7:00 p.m.** through Christmas on Sunday, **December 25** at the Waikiki Beach Walk Plaza.

1. Roy's Waikiki

Reserve a table at [Roy's Waikiki](#) to experience their carefully crafted seafood dishes made with fresh local ingredients. They offer Hawaiian Fusion Cuisine that is as unique as it is tasty. Order from a special Prix Fixe Menu to try a variety of flavors or indulge in your favorite entrees like Misoyaki Butterfish and Filet Mignon. Be sure to pair with your favorite wine and finish with a delectable dessert. Choose from dining on the lanai, an intimate table inside, or even the sushi counter.



2. Giovanni Pastrami

Have you got family coming to town? [Giovanni Pastrami](#) is the ideal place for take-out that is guaranteed to be a crowd pleaser. They also offer delivery to many Waikiki Hotels. Locally owned and operated, they are Waikiki's premier New York-Style Deli, Pizzeria, and Sports Bar. Watch your favorite teams play on any of their 22 HD flat screen TVs while enjoying the best comfort foods made with fresh gourmet ingredients. Their Round Table pizzas, homemade pastas, and hearty sandwiches will curb your cravings and leave you feeling satisfied. Join

them M-F afternoons for happy hour or any night of the week for live music.

3. Ruth's Chris Steak House

Among the exceptional dining options at Waikiki Beach Walk, [Ruth's Chris Steak House](#) has been Hawaii's go-to steakhouse for both locals and visitors for more than 30 years. This New Orleans inspired cuisine features the finest USDA prime steaks, fresh island seafood, award-winning wine list and a variety of appetizers, side dishes, and desserts. Enjoy the upscale ambience by dining inside or take advantage of Ruth's Chris easy online ordering anywhere for a gourmet dinner to-go. Ruth's Chris Waikiki Beach Walk offers group dining experiences and a private room, ideal for the most festive occasions. Call for details or to learn about Ruth's Chris Dine-in or Take-out: 808.440.7910.



4. Yard House

The most impressive and expansive selection of beer on the island can be found at Waikiki Beach Walk's [Yard House](#). Originally inspired and created in California, the 250-tap draft beer system allows each location to have its own unique variety of regional and local drafts, along with other special seasonal options and popular favorites.



Their food menu is equally as vast with over 100 items to choose from. They serve everything from popular American favorites like burgers and wings, to pizza, pasta, salads, seafood, local favorites, and more. Yard House truly has something for everyone. Famous for their classic and alternative rock playing atmosphere, diners are sure to leave

here in a great mood.

5. Taormina Sicilian Cuisine

Enjoy the cuisine of charming southern Sicily with a modern flair at [Taormina Sicilian Cuisine](#). Executive Chef Hiro Mimura honors the simplistic beauty of light sauces paired with fresh pasta, grilled fish, lamb, and steamed vegetables seasoned with an array of herbs. Guests are welcomed for a special lunch menu or a full dinner menu and have the choice to enjoy their meal inside or on the lanai.

Feeling adventurous? Try the four-course tasting menu that starts with Chef's Carpaccio, your choice of pasta, a main entrée, and ends with a delectable homemade tiramisu. Master Sommelier Roberto Viernes has created a carefully selected wine list with more than 125 choices, making it one of Hawaii's most diverse.



For more information on all events, shops and dining, visit www.waikikibeachwalk.com

Santa Claus is Comin' to Royal Hawaiian Center



Holiday Performance & Photos with Santa

WEDNESDAYS & SATURDAYS | NOW THRU DECEMBER 24

- 5:00-5:30pm Holiday Performance
- 5:30-7:00pm Photos with Santa

Get in the holiday spirit with weekly festive performances from 5pm-5:30pm and free printed photos with Santa from 5:30pm-7pm at Royal Hawaiian Center in The Royal Grove every Wednesday and Saturday, beginning Saturday, Nov. 26, through Saturday, Dec. 24. Keiki will also enjoy a complimentary sweet snack of delicious peppermint cookies from Honolulu Cookie Company and a Royal Santa Savings Pass, which unlocks exclusive holiday offers from participating shops and restaurants.

For more details, visit

www.royalhawaiiancenter.com/events/santa-photos-and-performances.

Holiday Gift with Purchase

Shoppers who visit the Center to check everyone off their holiday shopping list can take advantage of an exclusive holiday gift with purchase. Guests who present \$300 or more in combined receipts will receive a tote bag designed by local artist Aloha De Mele. Guests who present \$800 in combined receipts will receive holiday-themed packing cubes also designed by local artist JT Ojerio of Aloha De Mele. Those who spend \$1,200 or more will receive both items.

For a full list of events, visit

www.royalhawaiiancenter.com/events.

Rendering of the Gift with Purchase packing cubes designed by Aloha de Mele.



Holiday Hours at Royal Hawaiian Center

Last minute holiday shopping? Royal Hawaiian Center's got you covered! The center will stay **open from 11am-9pm daily** throughout the holiday season including Christmas Eve and Christmas Day.

For more information on holiday hours and parking, visit

www.royalhawaiiancenter.com.

Rooftop Stargazing in Paradise

DECEMBER 19, 2022 | AT 6:15PM | WALKWAY BETWEEN BUILDINGS A & B, L4

Celebrate the holidays with a night under the stars. On December 19 at 6:15pm, you and your 'ohana are invited for an up close and personal look at Saturn and its rings in the Hawaiian night sky. Join us for our monthly **Rooftop Stargazing** event (walkway between Buildings A & B, Level 4). The event is open to the public and free to attend! First come, first serve! Masks are encouraged and social distancing will be observed.

To learn more, visit www.royalhawaiiancenter.com/events/rooftop-stargazing.

For a full list of events, visit www.royalhawaiiancenter.com/events.



DECEMBER



KĒKĒMAPA 2022 | HELU 'UMIKUMALUA

Complimentary Programming

LĀ PULE SUNDAY	PŌ'AKAHI MONDAY	PŌ'ALUA TUESDAY	PŌ'AKOLU WEDNESDAY	PŌ'AHĀ THURSDAY	PŌ'ALIMA FRIDAY	PŌ'AONO SATURDAY
		LOCAL INFORMATION A2: Building A, 2nd Floor G1: The Grove Stage HH: Helumoa Hale For more information, call Helumoa Hale Guest Services. (808 922-2299)		1 <ul style="list-style-type: none"> 12PM G1 Keiki Hula Lesson 5:30PM - 6:30PM G1 Ha'eha'e Girls 	2 <ul style="list-style-type: none"> 12PM - 1PM A2 Lei Making Lesson 5:30PM - 6:30PM G1 Malu Productions 	3 <ul style="list-style-type: none"> 4:30PM - 5PM G1 Keiki Hula 5:00PM - 5:30PM G1 Holiday Performance 5:30PM - 7PM G1 Photos with Santa 5:30PM - 6:30PM G1 Kawika Trask Trio
4	5 <ul style="list-style-type: none"> 5:30PM - 6:30PM G1 Pu'uhonua 	6 <ul style="list-style-type: none"> 11AM - 12PM G1 Hula Lesson 5:30PM - 6:30PM G1 Kawika Trask Trio 	7 <ul style="list-style-type: none"> 11AM - 12PM A2 Lauhala Lesson 5:00PM - 5:30PM G1 Holiday Performance 5:30PM - 7PM G1 Photos with Santa 	8 <ul style="list-style-type: none"> 12PM G1 Keiki Hula Lesson 5:30PM - 6:30PM G1 Ha'eha'e Girls 	9 <ul style="list-style-type: none"> 12PM - 1PM A2 Lei Making Lesson 5:30PM - 6:30PM G1 Malu Productions 	10 <ul style="list-style-type: none"> 4:30PM - 5PM G1 Keiki Hula 5:00PM - 5:30PM G1 Holiday Performance 5:30PM - 7PM G1 Photos with Santa 5:30PM - 6:30PM G1 Kawika Trask Trio
11	12 <ul style="list-style-type: none"> 5:30PM - 6:30PM G1 Pu'uhonua 	13 <ul style="list-style-type: none"> 11AM - 12PM G1 Hula Lesson 5:30PM - 6:30PM G1 Kawika Trask Trio 	14 <ul style="list-style-type: none"> 11AM - 12PM A2 Lauhala Lesson 5:00PM - 5:30PM G1 Holiday Performance 5:30PM - 7PM G1 Photos with Santa 	15 <ul style="list-style-type: none"> 12PM G1 Keiki Hula Lesson 5:30PM - 6:30PM G1 Ha'eha'e Girls 	16 <ul style="list-style-type: none"> 12PM - 1PM A2 Lei Making Lesson 5:30PM - 6:30PM G1 Malu Productions 	17 <ul style="list-style-type: none"> 4:30PM - 5PM G1 Keiki Hula 5:00PM - 5:30PM G1 Holiday Performance 5:30PM - 7PM G1 Photos with Santa 5:30PM - 6:30PM G1 Kawika Trask Trio
18	19 <ul style="list-style-type: none"> 5:30PM - 6:30PM G1 Pu'uhonua 	20 <ul style="list-style-type: none"> 11AM - 12PM G1 Hula Lesson 5:30PM - 6:30PM G1 Kawika Trask Trio 	21 <ul style="list-style-type: none"> 11AM - 12PM A2 Lauhala Lesson 5:00PM - 5:30PM G1 Holiday Performance 5:30PM - 7PM G1 Photos with Santa 	22 <ul style="list-style-type: none"> 12PM G1 Keiki Hula Lesson 5:30PM - 6:30PM G1 Ha'eha'e Girls 	23 <ul style="list-style-type: none"> 12PM - 1PM A2 Lei Making Lesson 5:30PM - 6:30PM G1 Malu Productions 	24 Christmas Eve <ul style="list-style-type: none"> 4:30PM - 5PM G1 Keiki Hula 5:00PM - 5:30PM G1 Holiday Performance 5:30PM - 7PM G1 Photos with Santa 5:30PM - 6:30PM G1 Kawika Trask Trio
25 Christmas Day	26 <ul style="list-style-type: none"> 5:30PM - 6:30PM G1 Pu'uhonua 	27 <ul style="list-style-type: none"> 11AM - 12PM G1 Hula Lesson 5:30PM - 6:30PM G1 Kawika Trask Trio 	28 <ul style="list-style-type: none"> 11AM - 12PM A2 Lauhala Lesson 	29 <ul style="list-style-type: none"> 12PM G1 Keiki Hula Lesson 5:30PM - 6:30PM G1 Ha'eha'e Girls 	30 <ul style="list-style-type: none"> 12PM - 1PM A2 Lei Making Lesson 5:30PM - 6:30PM G1 Malu Productions 	31 New Year's Eve

All programming is subject to change or cancellation. Contact Helumoa Hale Guest Services at 808.922.2299 or text us at 808.425.9088 for the latest information. Standard parking rates apply.

the Waikiki

SHOPPING PLAZA

December 2022

Industry Parking

Industry workers with valid proof of employment in Waikiki may purchase discounted industry validations to park in Waikiki Shopping Plaza for \$10 (maximum of 10 hours).

For more information regarding the discounted validations, please visit our website:
waikikishoppingplaza.com/industry



Shopping

ABC Stores (WBP)
Belle Vie
Black Palette Tattoo 
H&M
Hamilton Boutique
HiLife
Honolulu Cookie Company

LC Creations
Lono God of Peace
Lululemon
Maxi Hawaiian Jewelry
Pure Stone
Quiksilver
Sephora

Tiki Products
USPS
Victoria's Secret
Wahing Jewelry
Waikiki Trolley Kiosk
World Assistance Services

Dining

Buho Cantina
Royal Lobster
Sky Waikiki
Starbucks
Tanaka of Tokyo

Parking

Waikiki Shopping Plaza
\$3 per half hour
\$15 Daytime Special: Up to 10 hours for \$15
if you enter the lot from 6:30am - 4:30pm

Waikiki Business Plaza
\$3 per half hour

Available in the Waikiki Business Plaza & Waikiki Shopping Plaza during parking lot operating hours.

The Waikiki Business Plaza & Waikiki Shopping Plaza parking lot and building operating hours are from 6:30am – 12am.
Management Office hours are from 9am – 4pm.

2250 Kalakaua Ave, Honolulu, HI 96815
waikikishoppingplaza.com



WAIKĪKĪ IMPROVEMENT ASSOCIATION

Wikiwiki Wire is published on the first Monday of each month. If you would like to share your news with other members, please send your info to: editor@waikikiimprovement.com.

Submission Deadline

Waikīkī-related news and information submitted by members (or their PR agencies) for the Wikiwiki Wire newsletter should be received no later than **5 PM MONDAY, ONE WEEK PRIOR** to the newsletter's publication and distribution on the first Monday of each month.

News & Stories: Please submit any Waikīkī-related stories/articles as a Word doc and include photos to accompany stories/ articles. For best results, please upload photos as a separate JPEG attachment - maximum 2 MB each image.

Flyers/PDFs: Waikīkī-related flyers are welcome but must look like advertising flyers and not press releases. Please format flyers to an 8.5" x 11" size and submit them in a PDF format.

Press Releases: Please submit Waikīkī-related press releases as a Word doc. Press Releases that do not fit within one page of the Wikiwiki Wire newsletter will be returned for editing.

Photos: For best results, please upload photos as a separate JPEG attachment - maximum 2 MB each image.



WAIKĪKĪ IMPROVEMENT ASSOCIATION

We are a cross-section of business, government and the community; our members care about the future of this special place - Waikīkī.

For more than 40 years, the Waikiki Improvement Association has remained true to its objective: to improve, enrich and beautify Waikīkī for the benefit of residents and visitors alike and to promote conditions conducive to the economic and cultural good and for the betterment of the entire community.

HAWAIIAN DIACRITICAL MARKS

Waikīkī Improvement Association recognizes the use of diacritical marks (i.e., glottal stop (ʻ), macron (ā) in place names of Hawaiʻi, such as Waikīkī and Kalākaua Avenue and will include them whenever possible. We also respect the individual use (or not) of these markings for names of organizations and businesses.

There will also be times when we may not have a chance to add or change the markings in all of the articles submitted and when that happens, e kala mai.